

VERSION 1.1
TYPE SPECIMEN





BACKGROUND

Blight is a blackletter forged from lattice geometry. It pays homage to electricity pylons - the steel structures that power nations, but split public opinion.

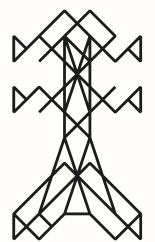
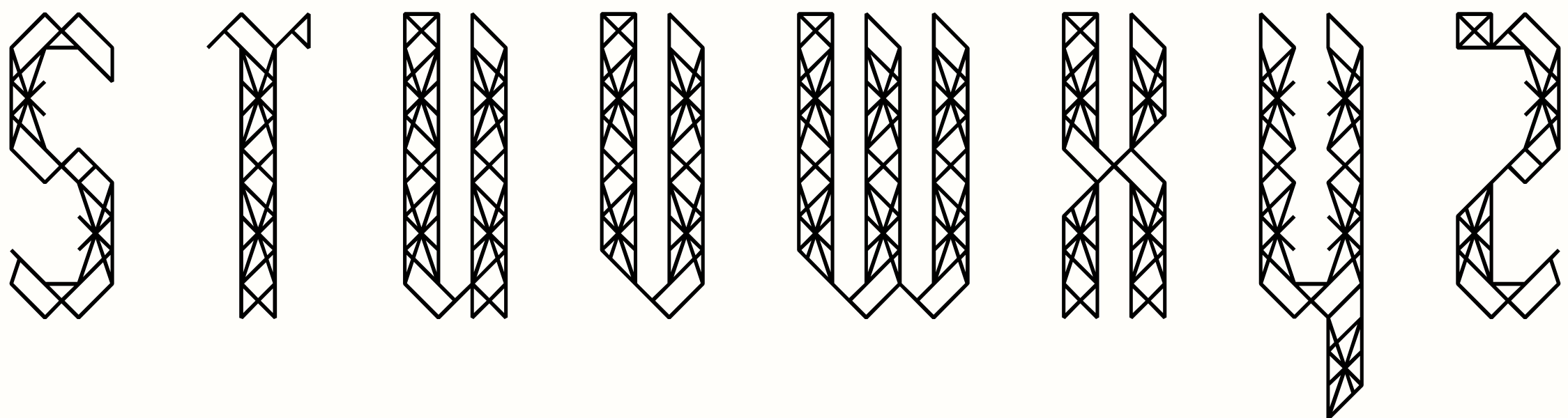
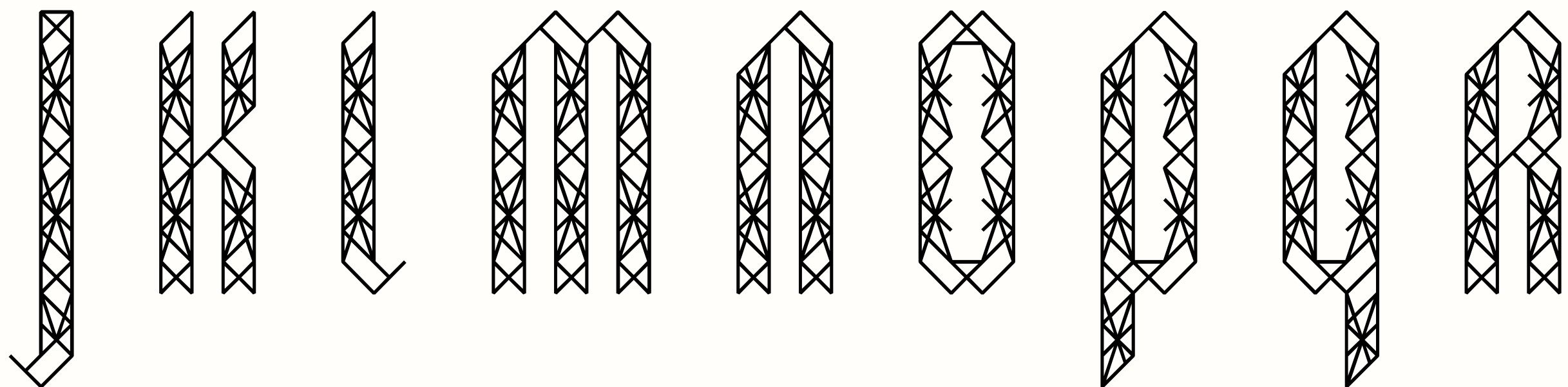
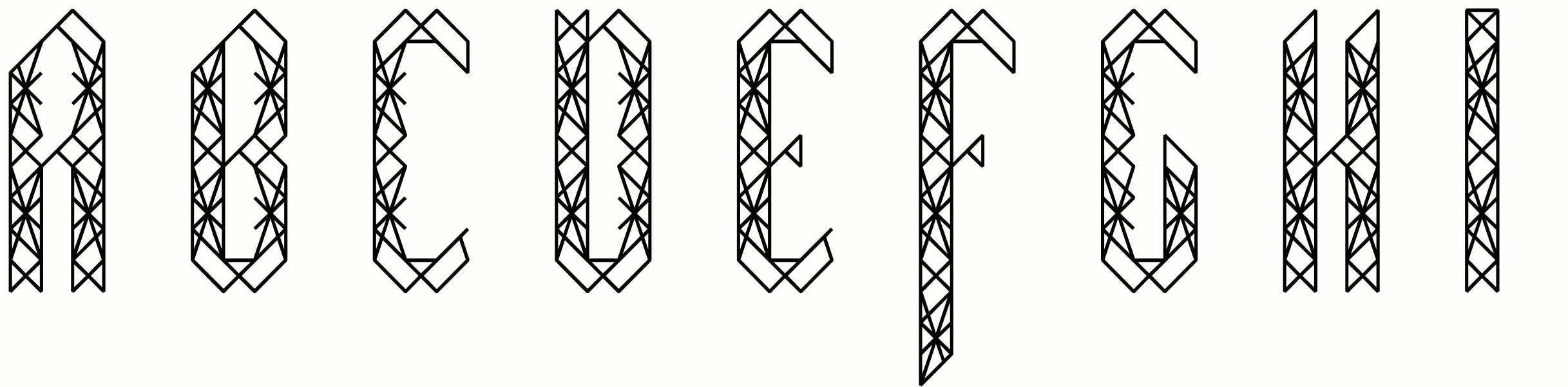
They are either known as towering eyesores that blight the countryside, or critical infrastructure worth treasuring (ref The Pylon Appreciation Society).

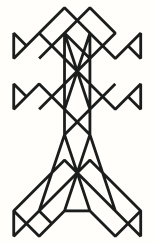
This typeface is sharp, brutalist and eccentric. It has been designed for display use and large format environmental graphics.

—
Secondary font:
Acumin Condensed Black & Regular
Available from Adobe fonts

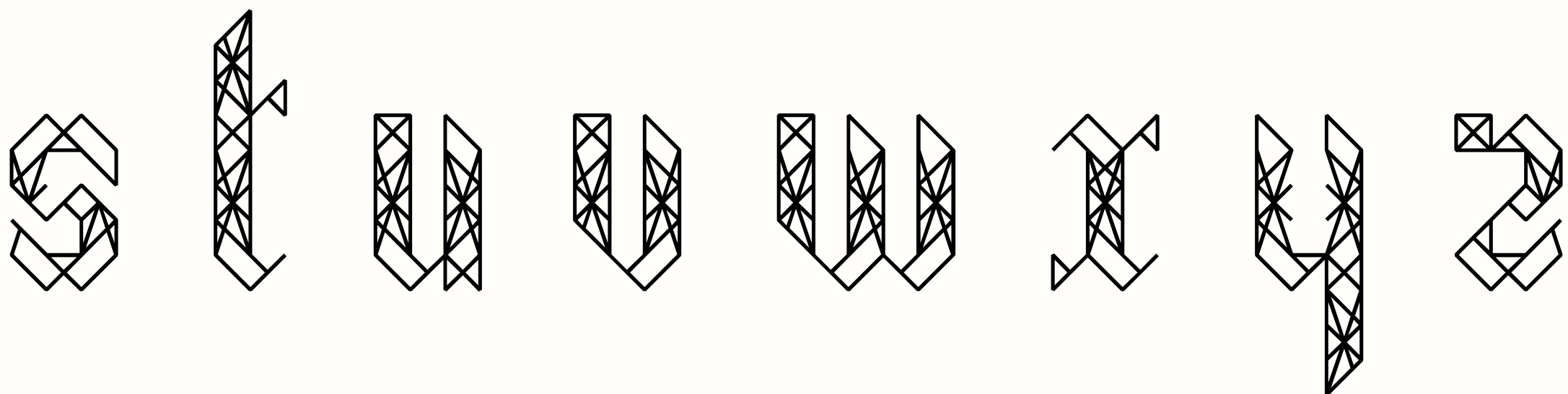
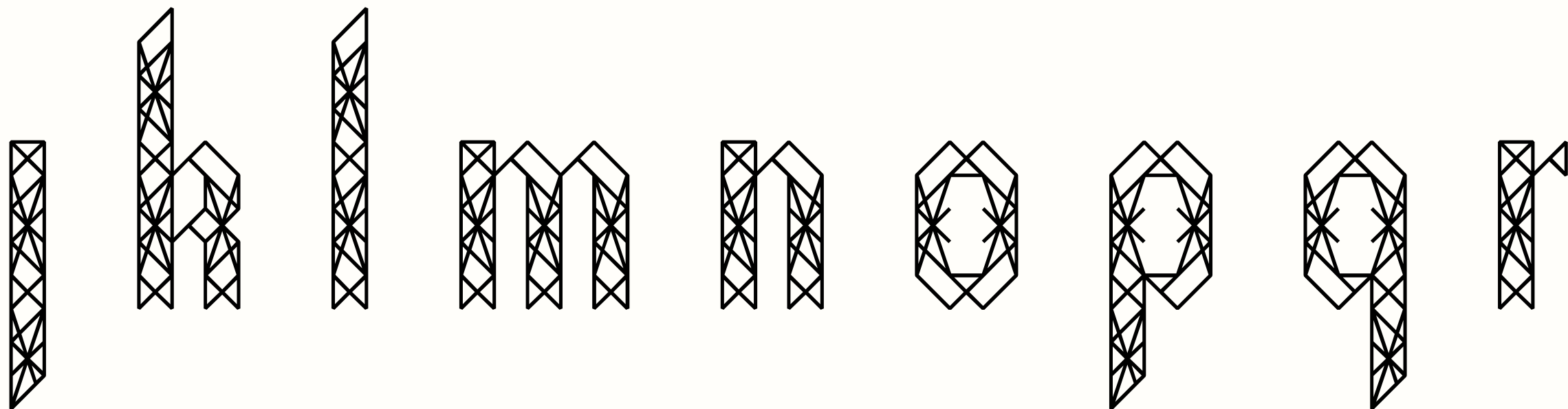
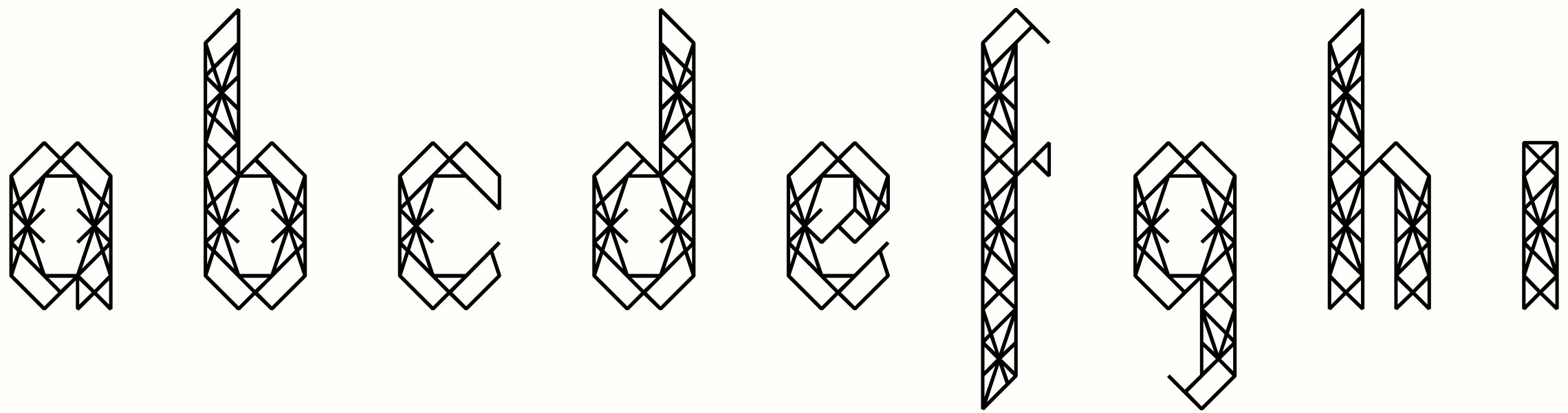


UPPERCASE

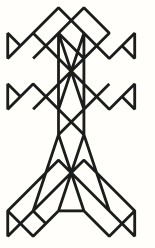
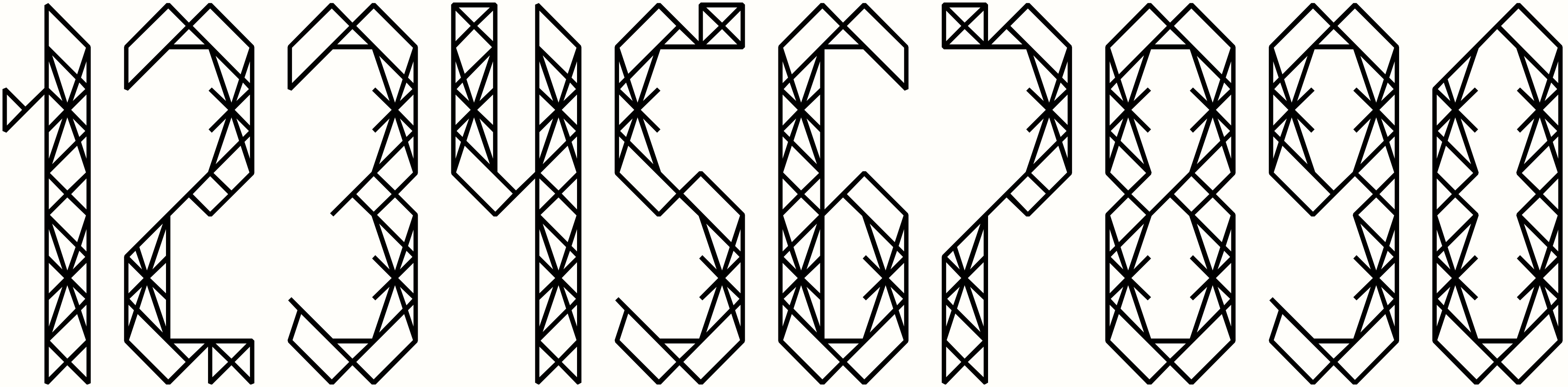


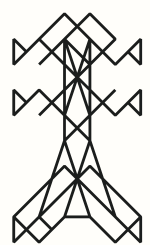


LOWERCASE

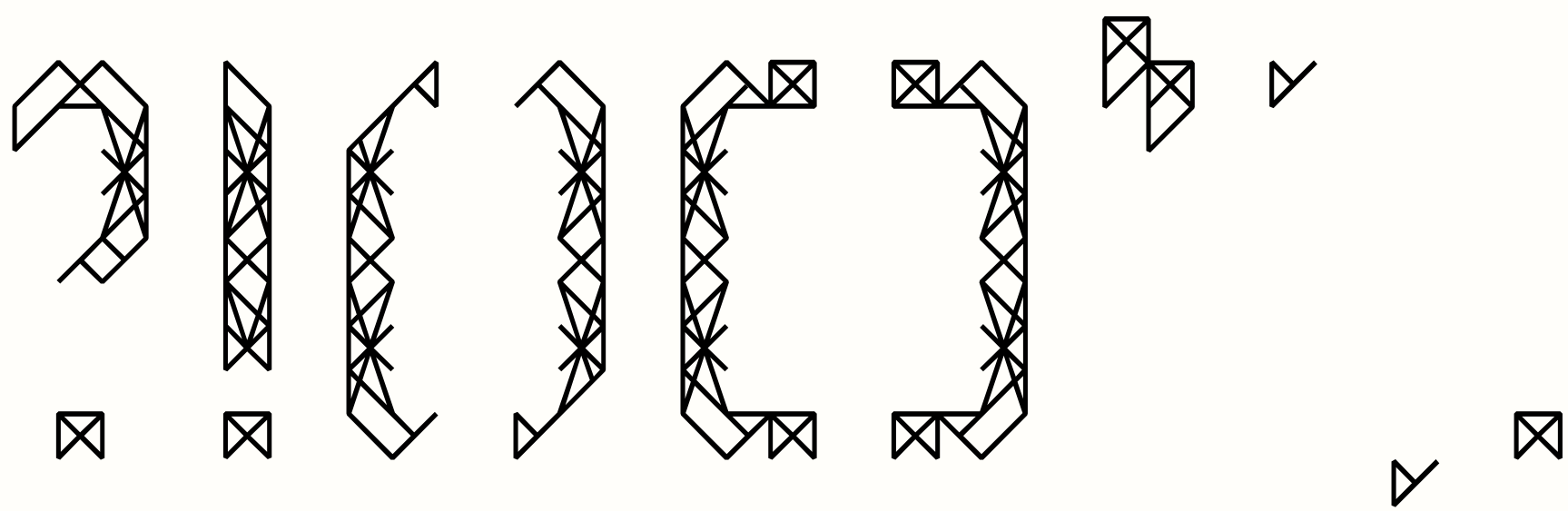


NUMBERS (XL)

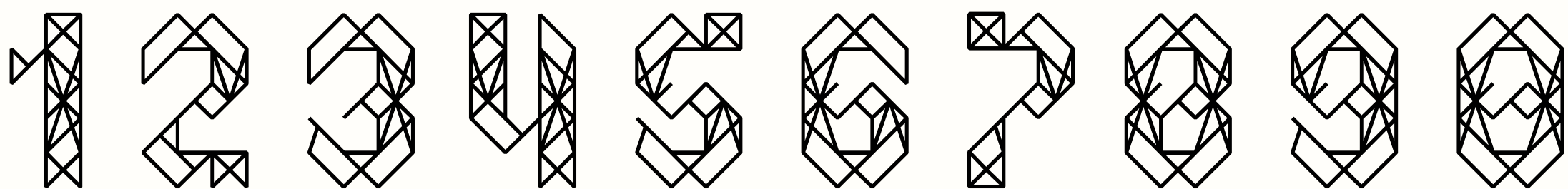




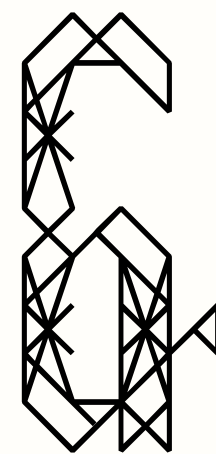
PUNCTUATION



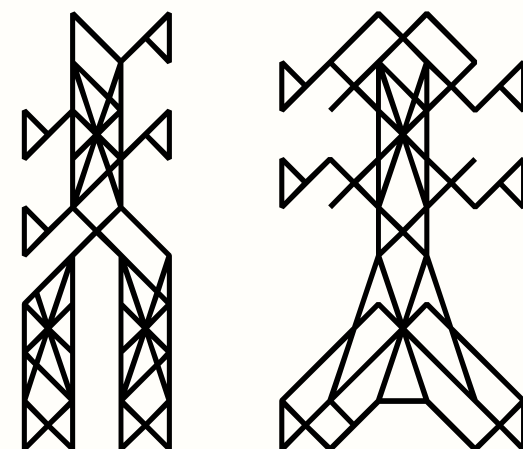
NUMBERS (S)



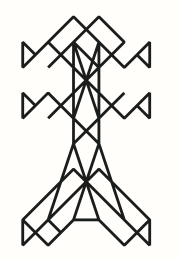
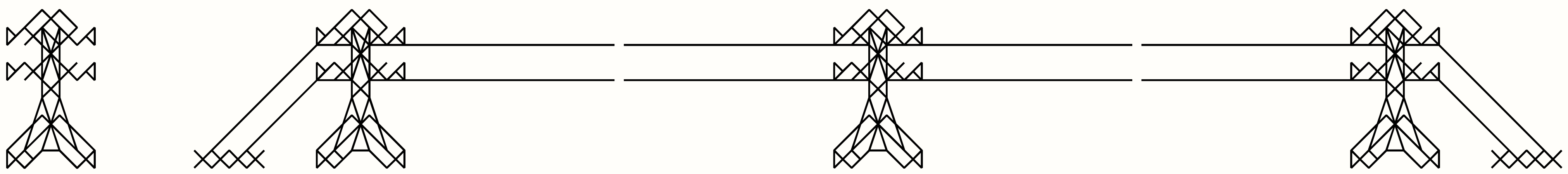
SYMBOLS



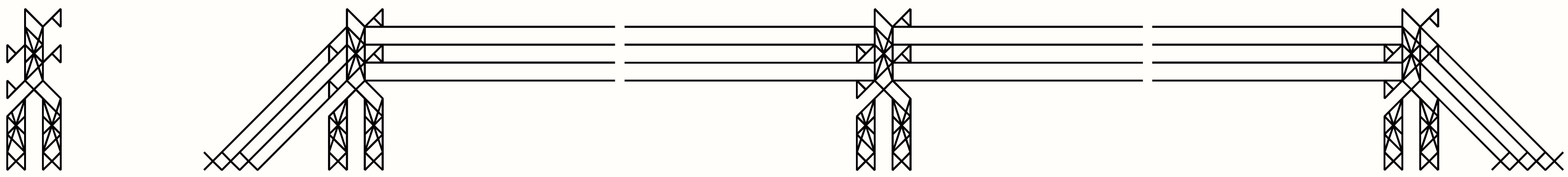
PYLONS



PYLON TYPE A



PYLON TYPE B

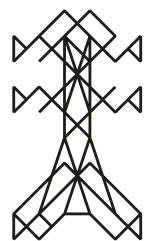


DISPLAY 235px

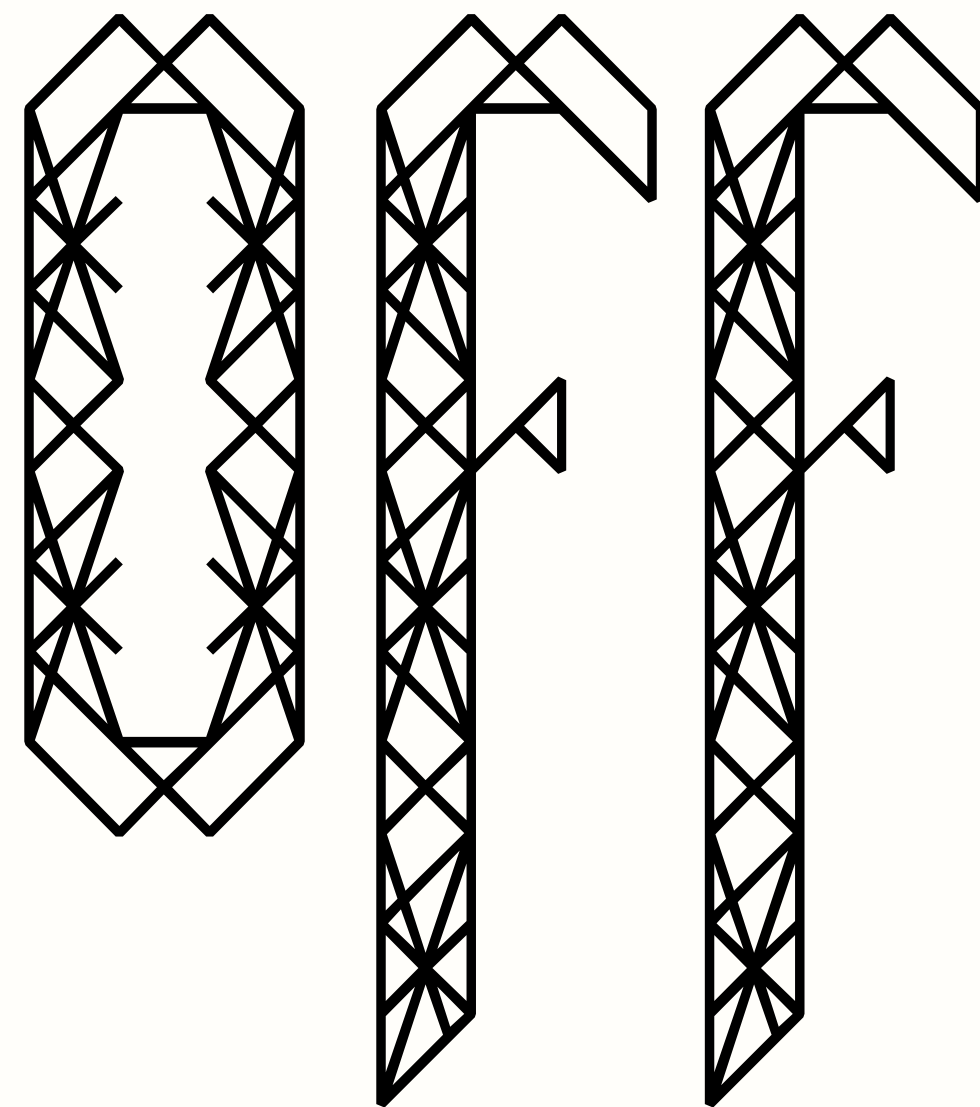
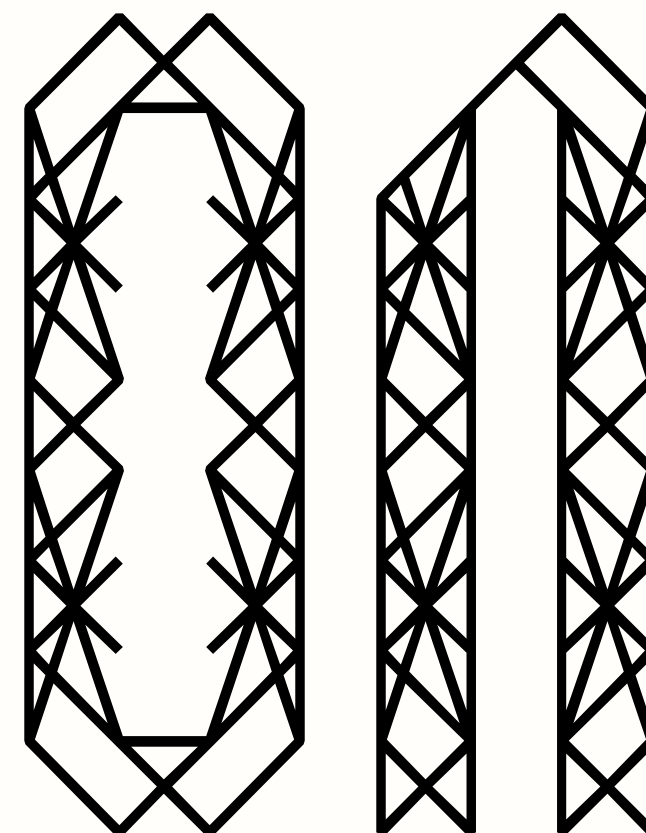
COOLIE VAN HALEN

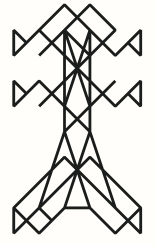
DISPLAY 138px

Most of what you see
when you look at one is
the background coming
through from behind it.



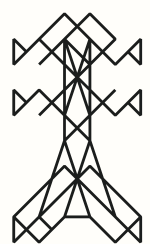
DISPLAY 440px





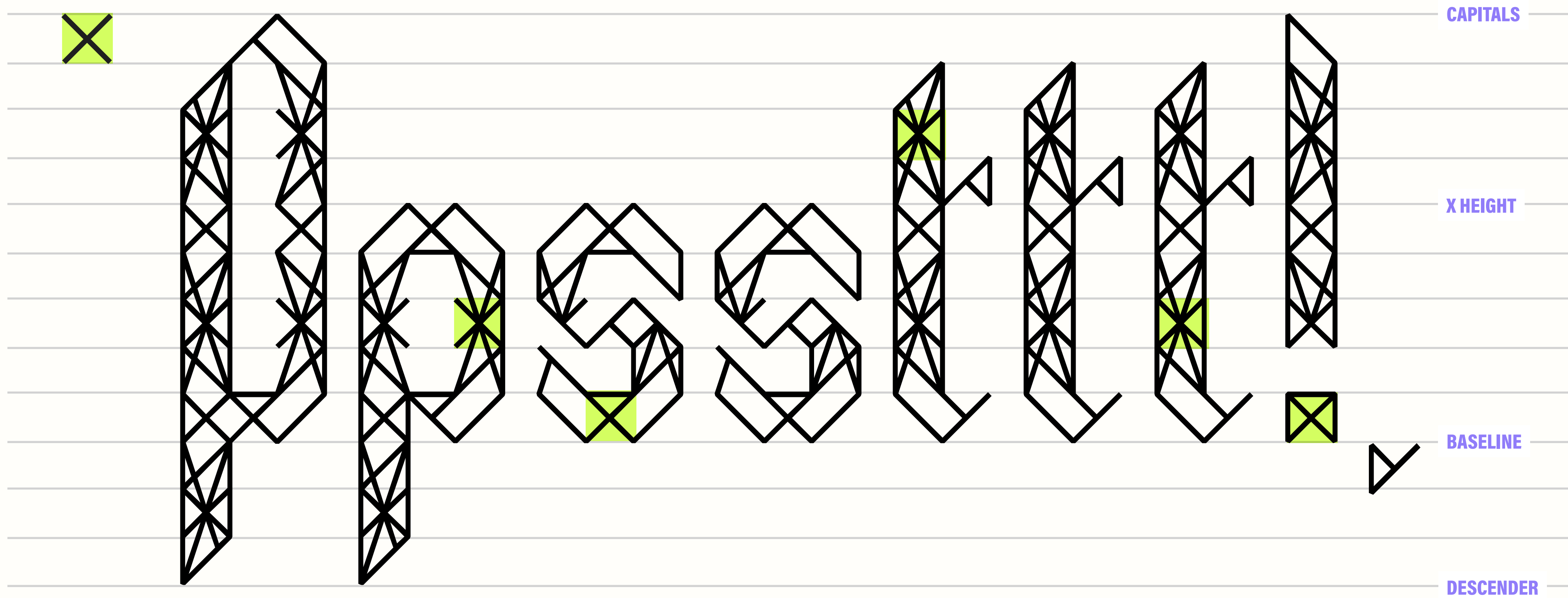
DISPLAY 260px

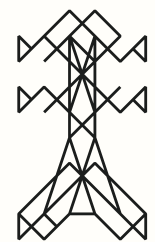
blight the countryside



BLIGHT ANATOMY

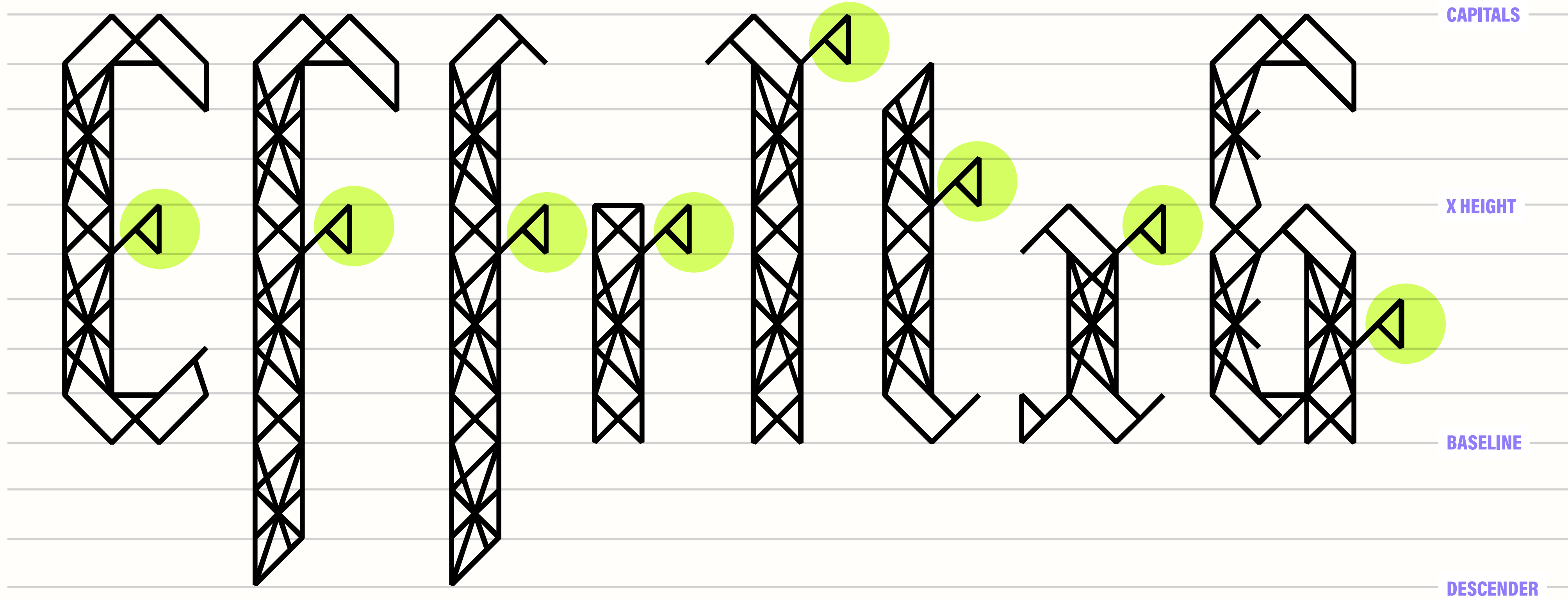
OVERVIEW

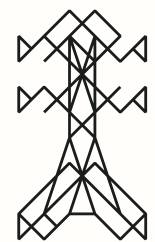




BLIGHT ANATOMY

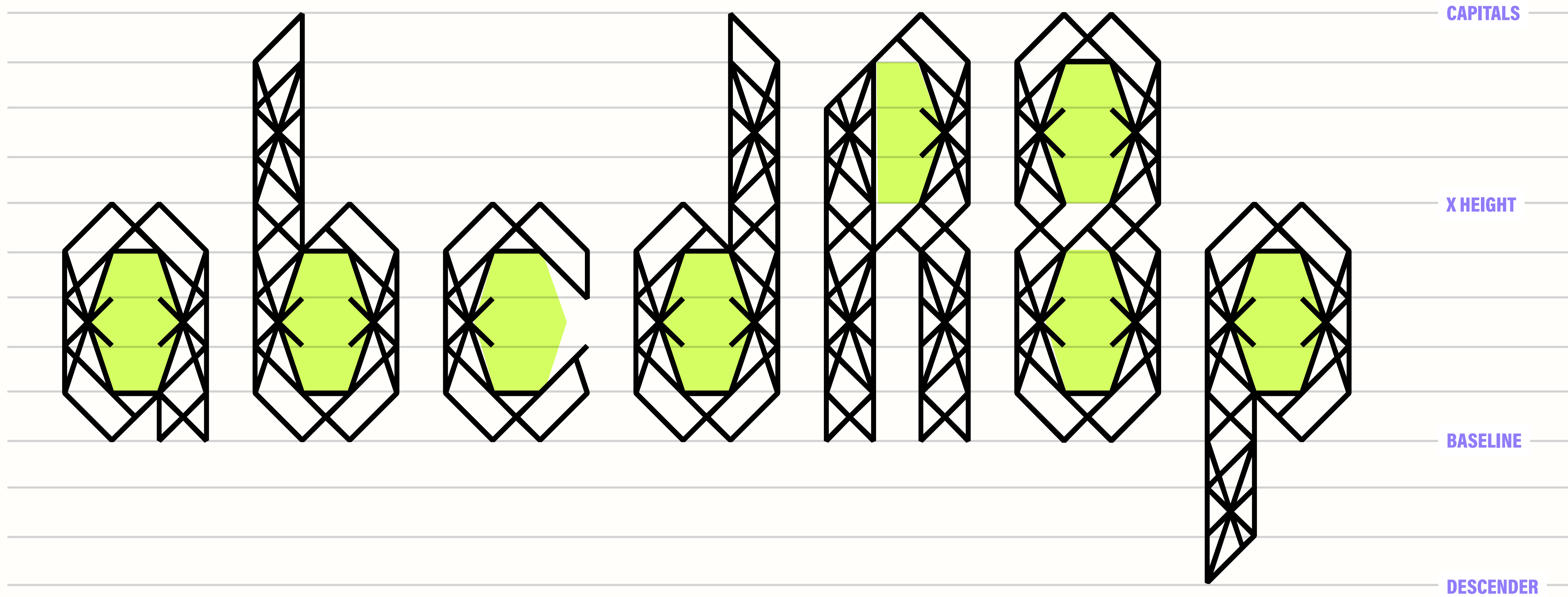
FORK

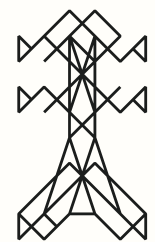




BLIGHT ANATOMY

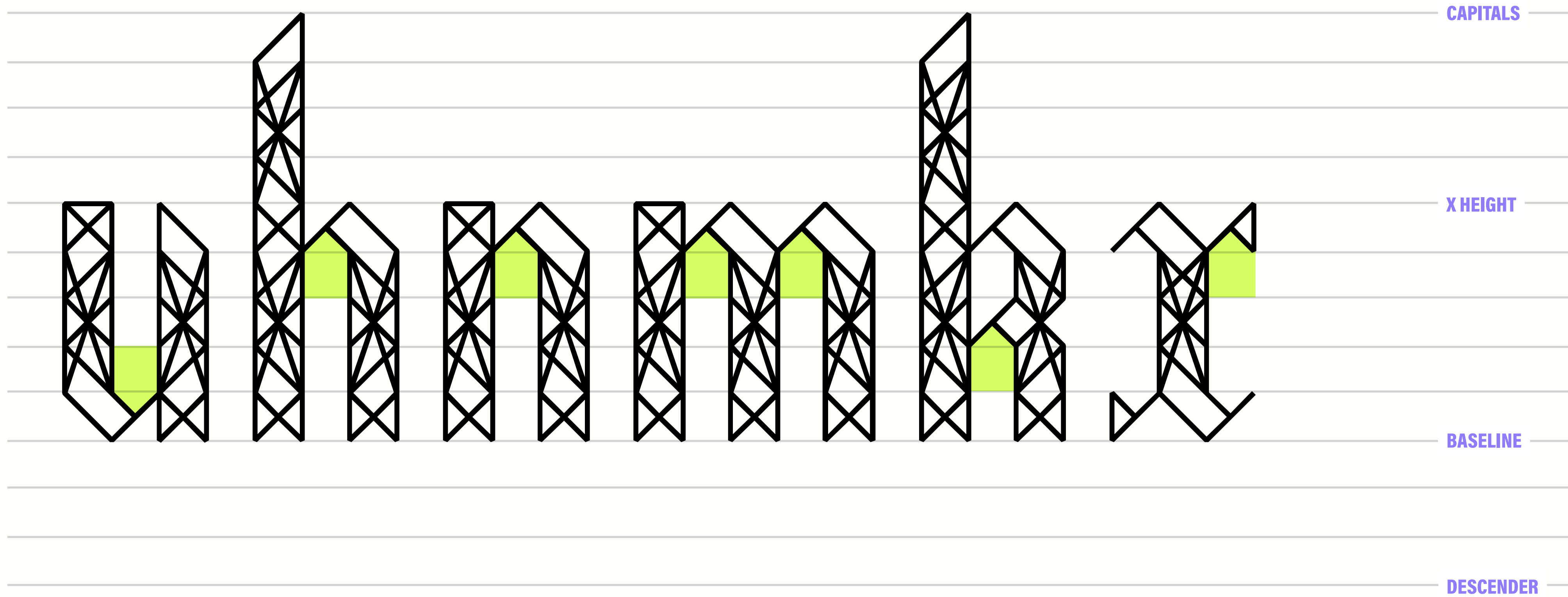
LATTICE COUNTERS

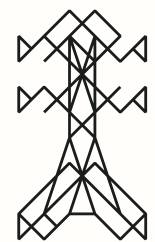




BLIGHT ANATOMY

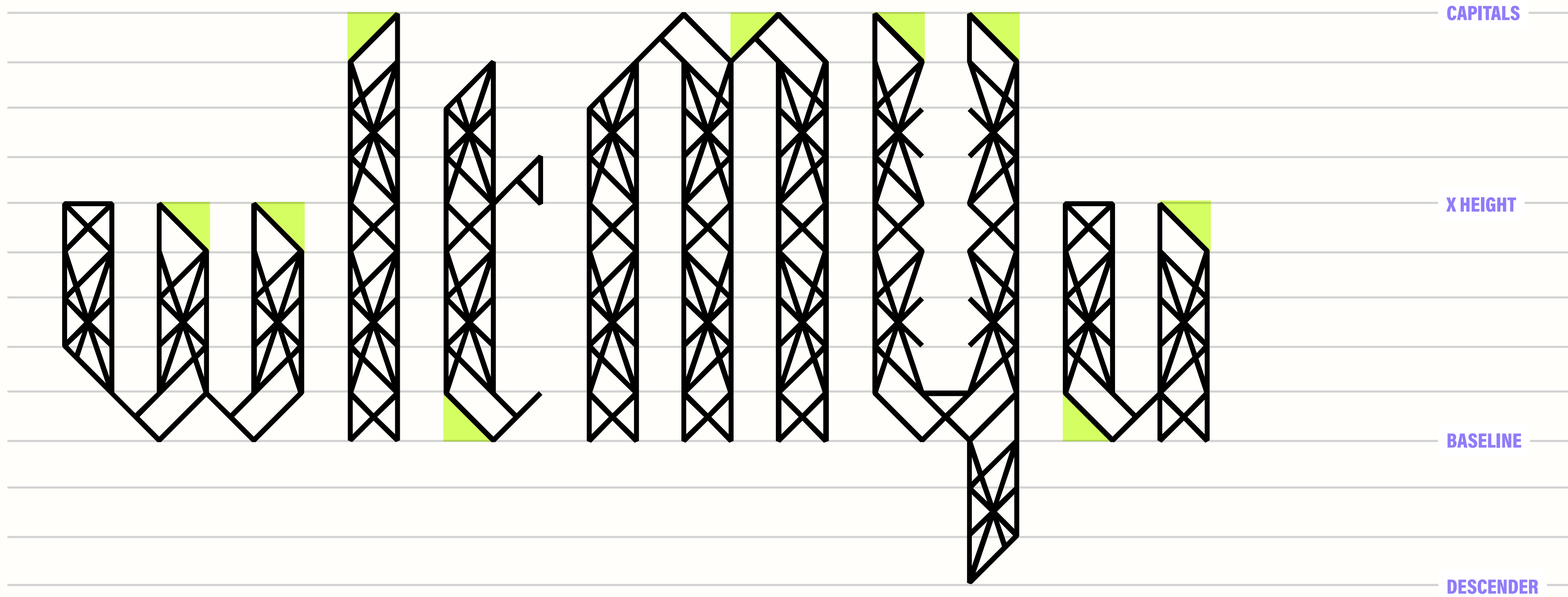
APERTURES

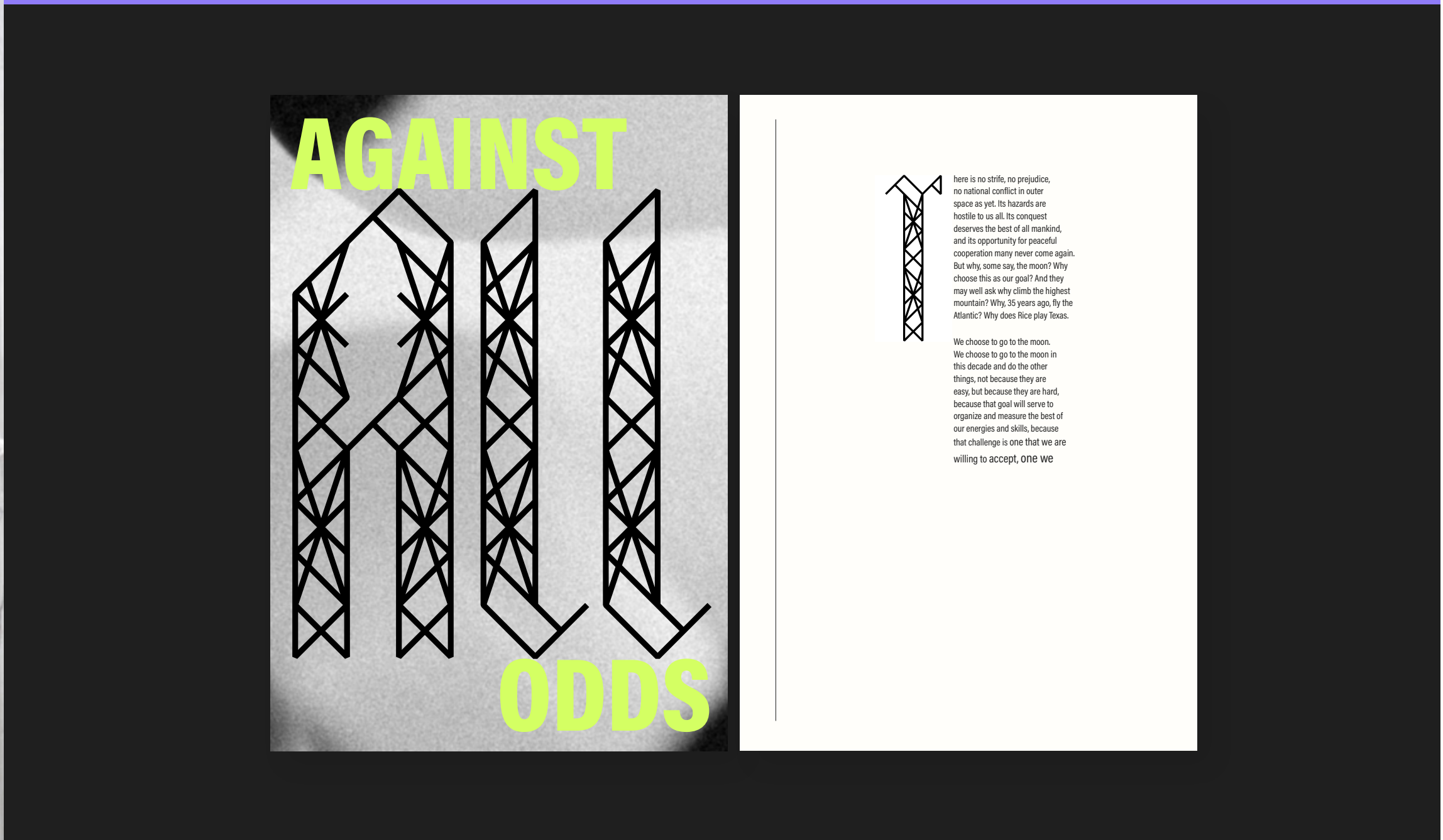
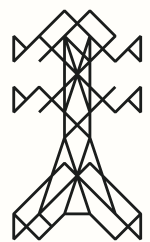




BLIGHT ANATOMY

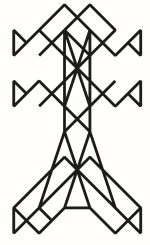
SLOPES





There is no strife, no prejudice,
no national conflict in outer
space as yet. Its hazards are
hostile to us all. Its conquest
deserves the best of all mankind,
and its opportunity for peaceful
cooperation many never come again.
But why some say, the moon? Why
choose this as our goal? And they
may well ask why climb the highest
mountain? Why, 35 years ago, fly the
Atlantic? Why does Rice play Texas.

We choose to go to the moon.
We choose to go to the moon in
this decade and do the other
things, not because they are
easy, but because they are hard,
because that goal will serve to
organize and measure the best of
our energies and skills, because
that challenge is one that we are
willing to accept, one we



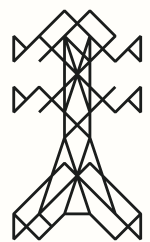
DISPLAY 235px

The quick brown fox
jumps over the lazy dog.

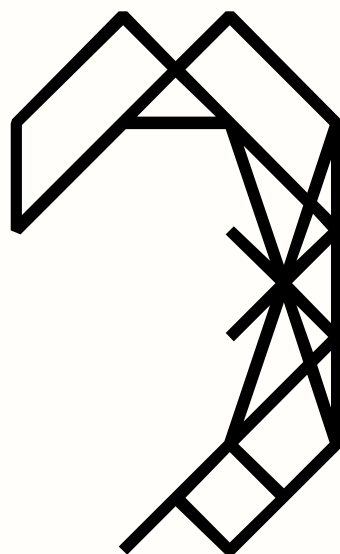
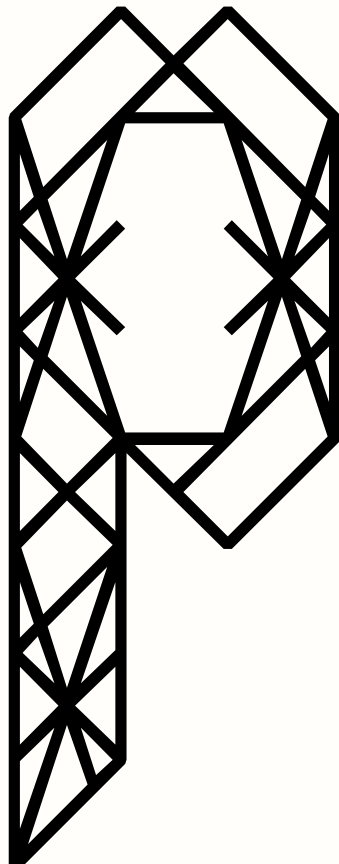
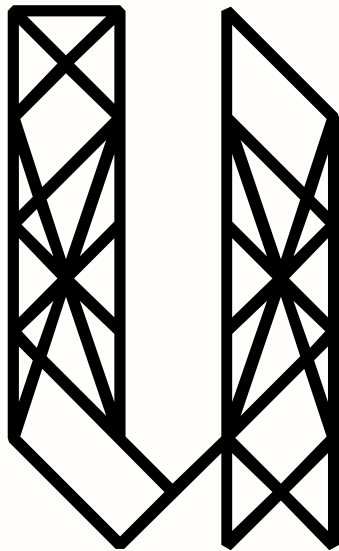
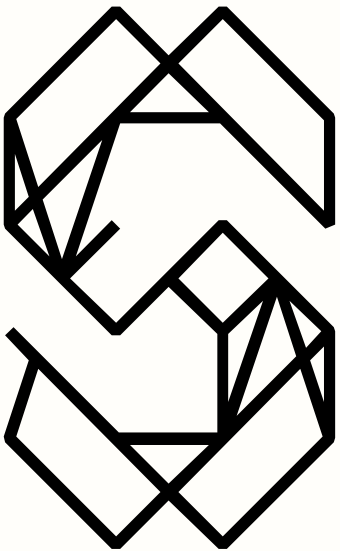
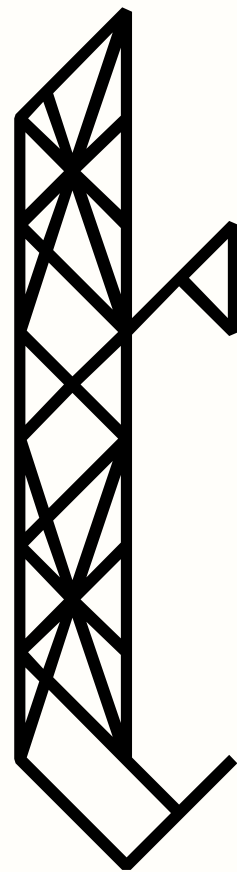
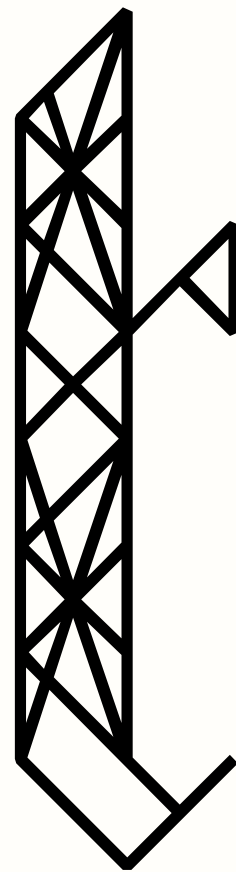
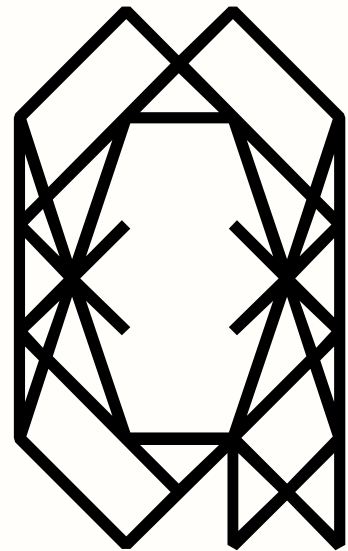
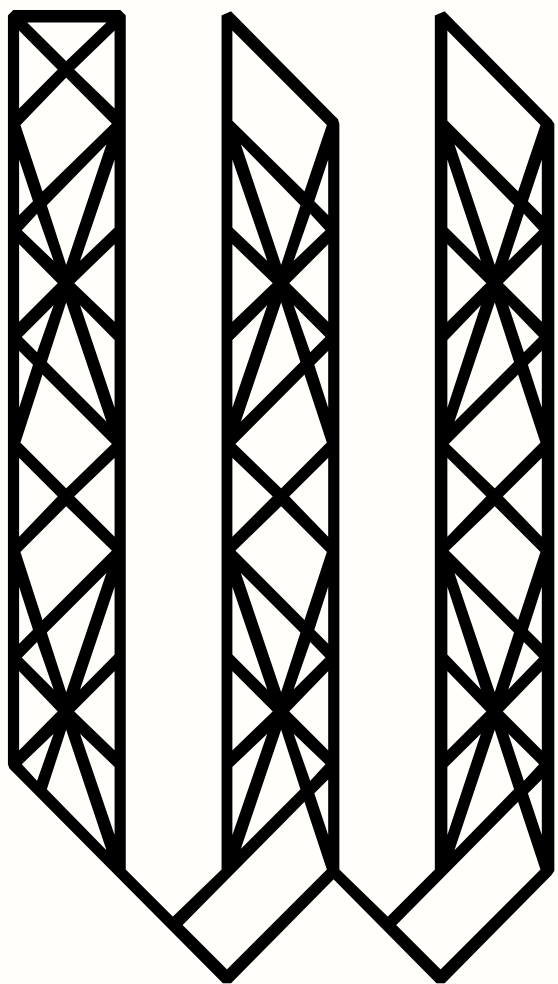
DISPLAY 382px

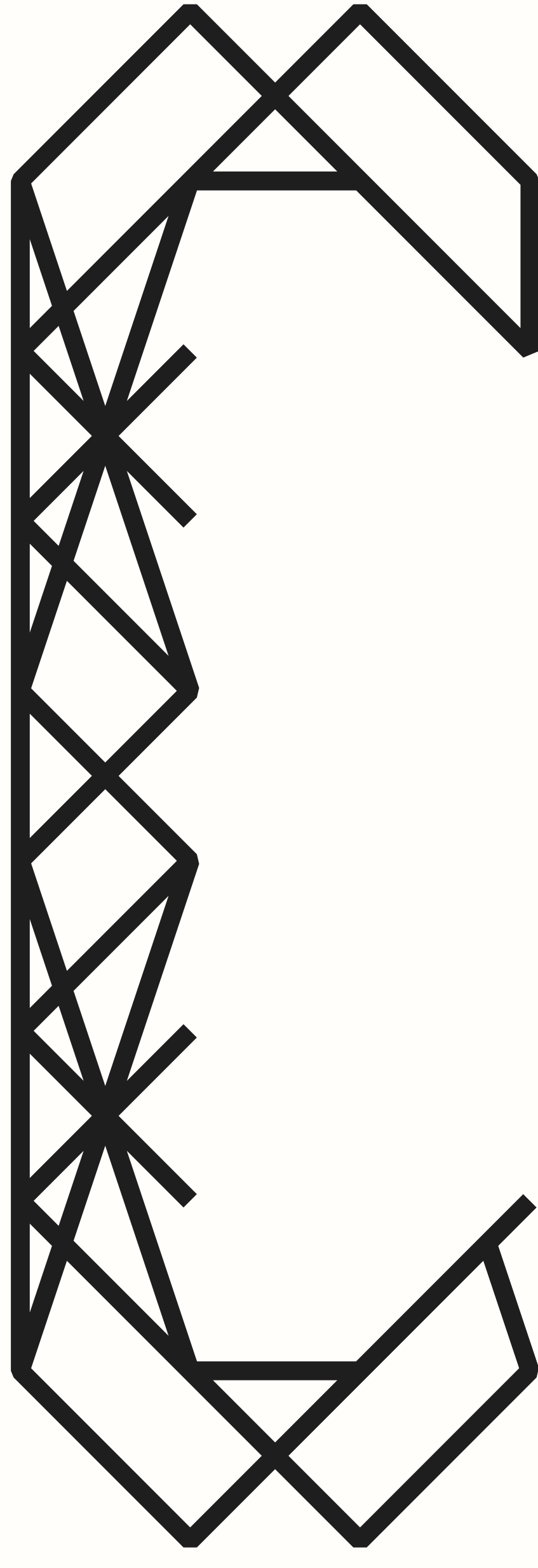
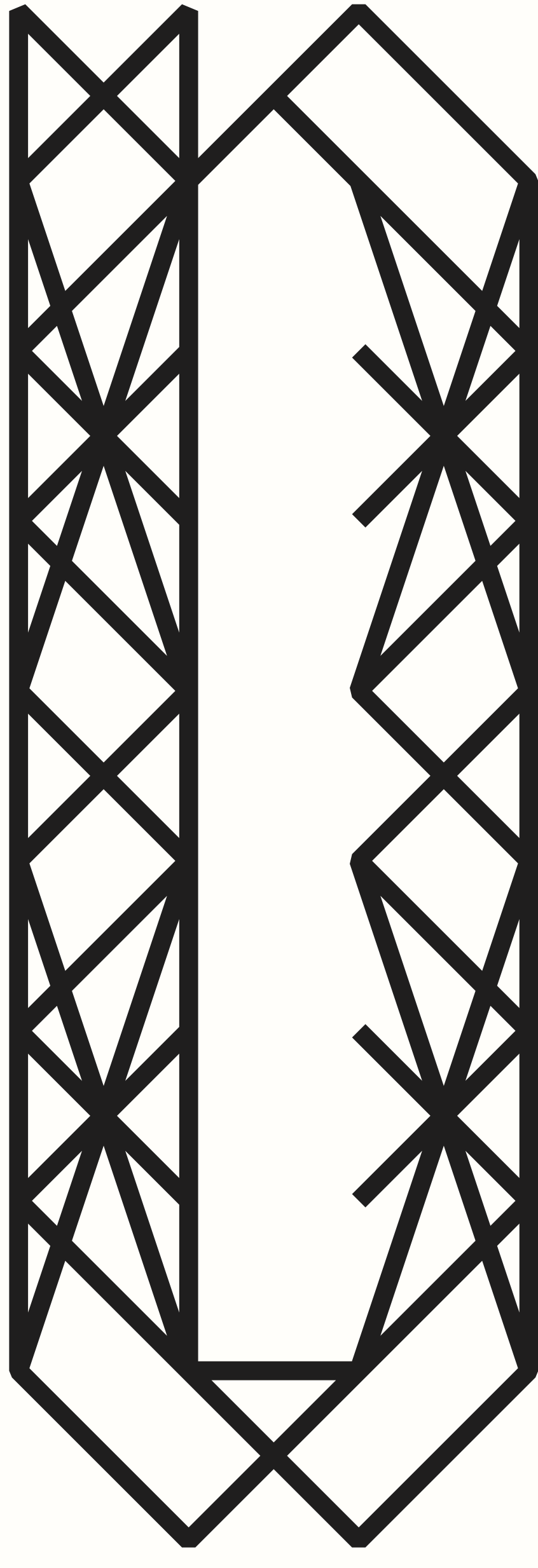
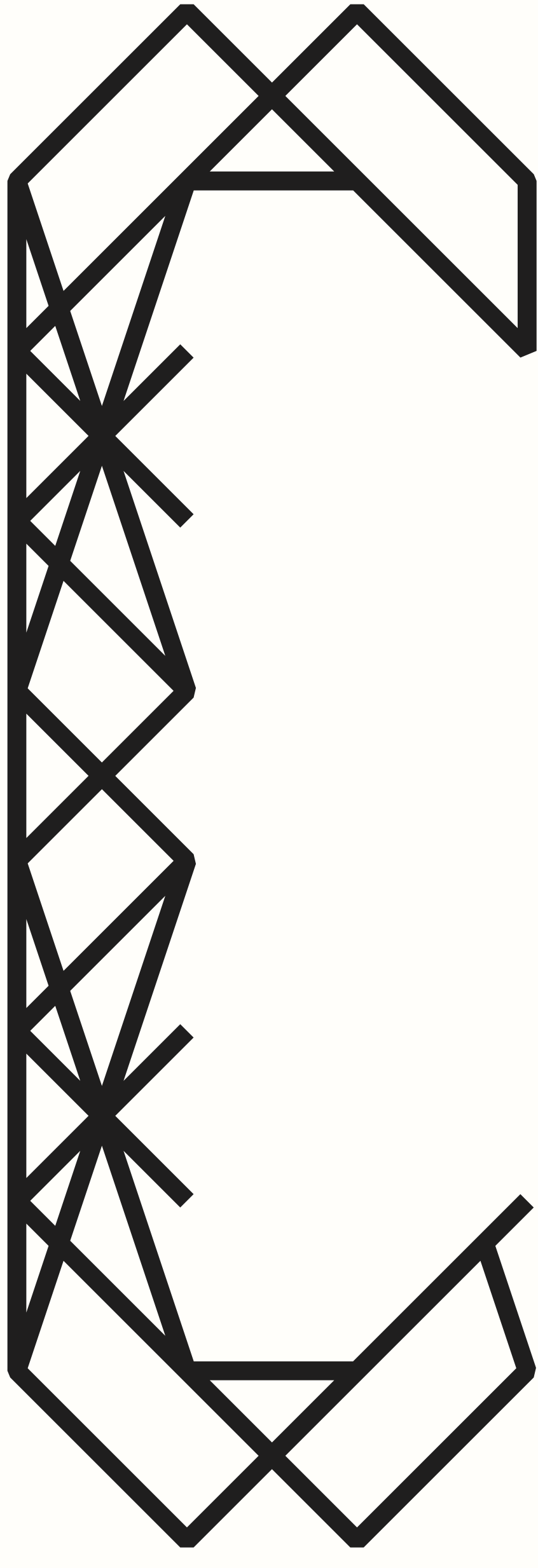
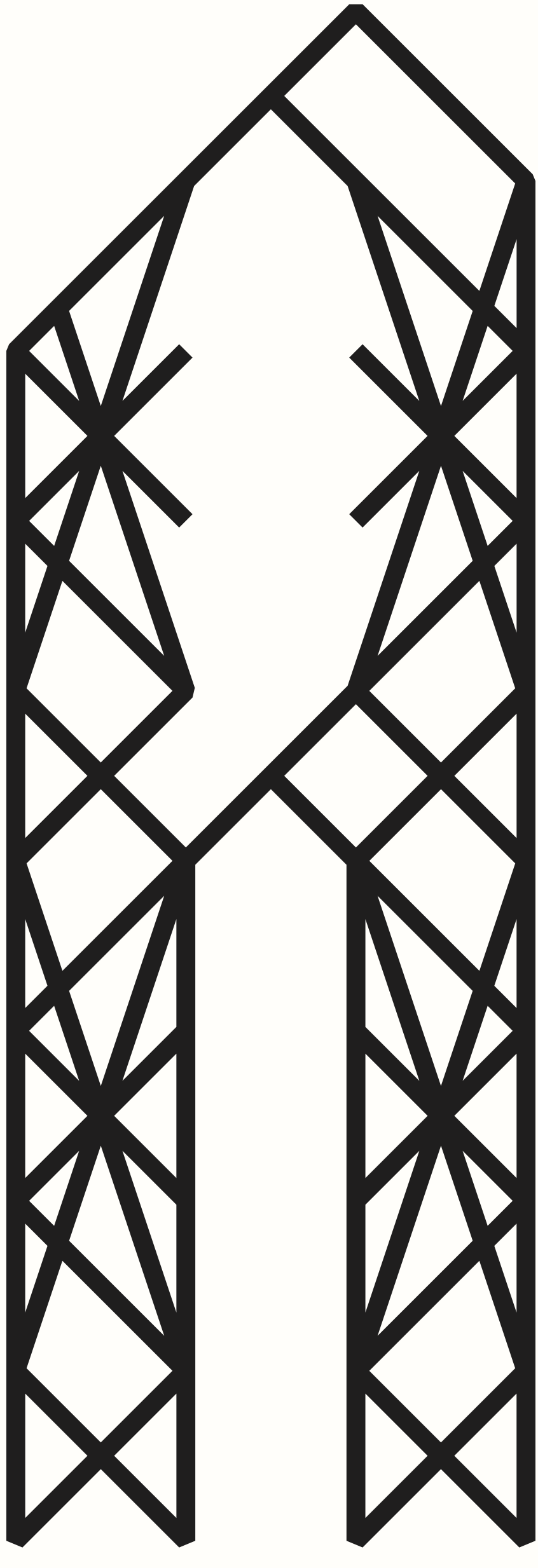
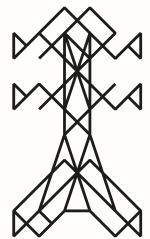
donner

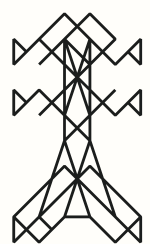




DISPLAY 520px







Young
YOUNG

Young
YOUNG

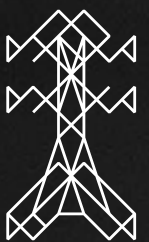
Scott
SCOTT

Williams
WILLIAMS

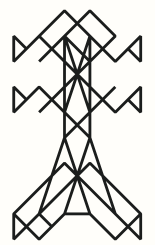
Rudd
RUDD



Sam Stanistreet



BLIGHT

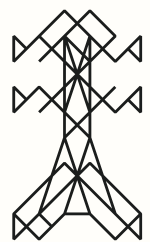


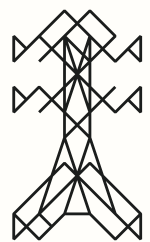
POWELLER

WITHE

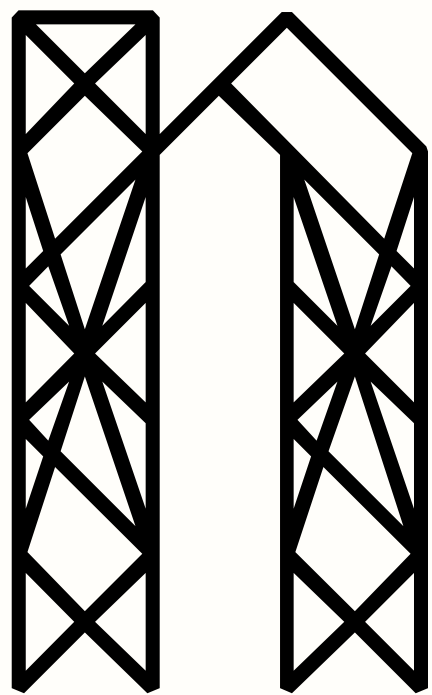
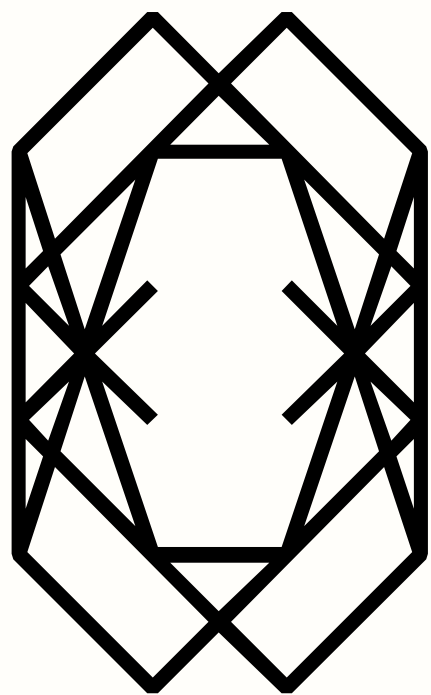
PEOPLE

10 BEST STUDIO ALBUMS

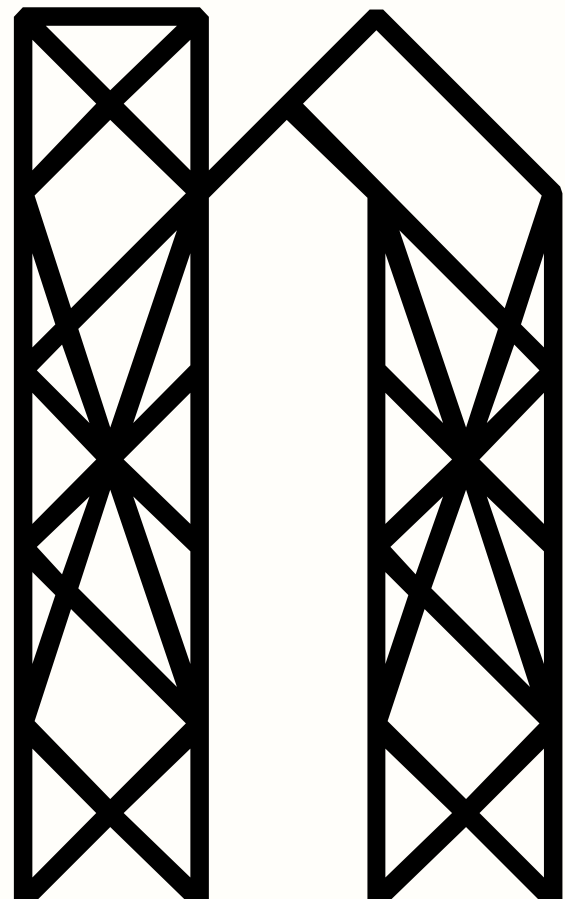
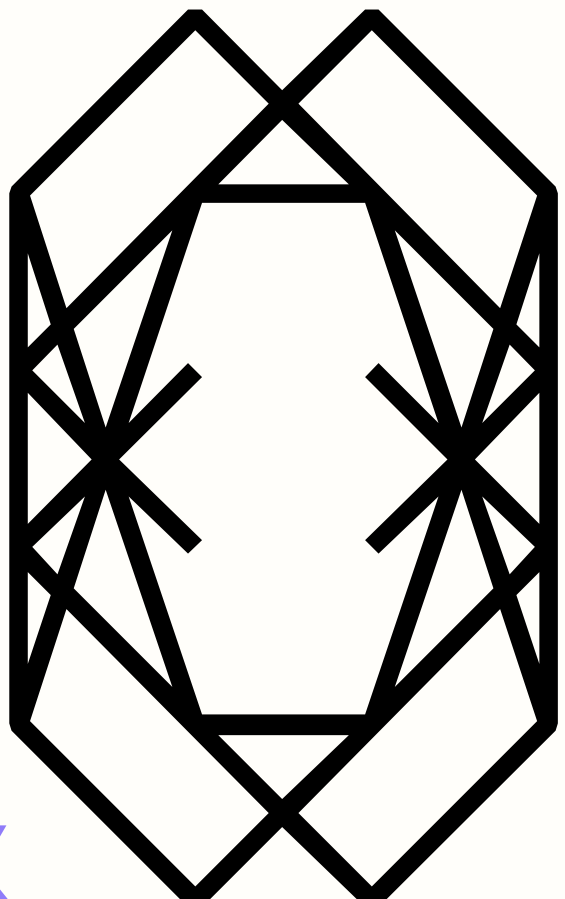




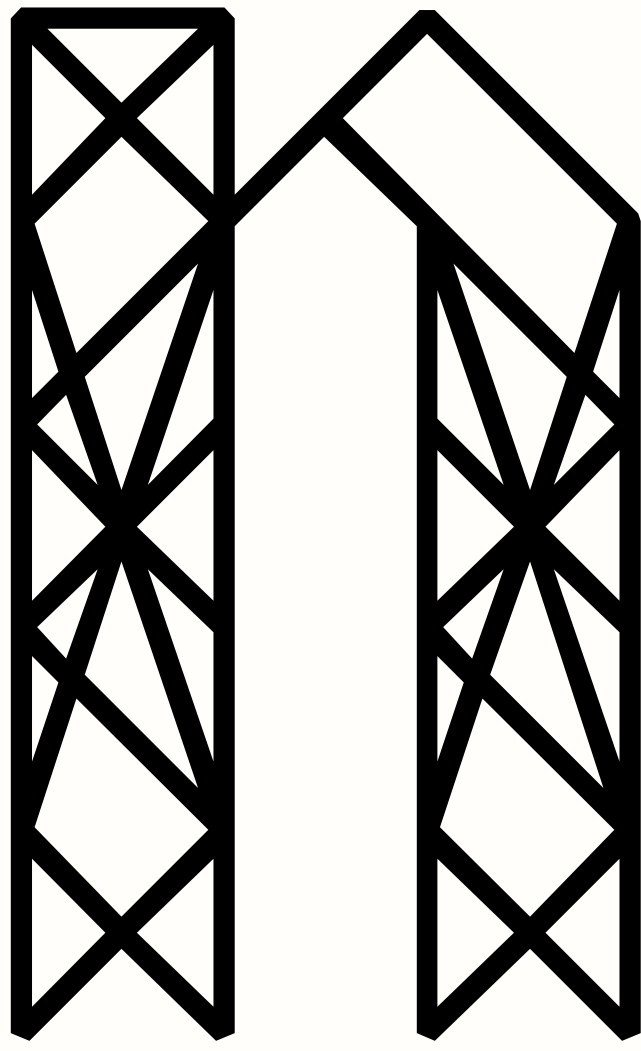
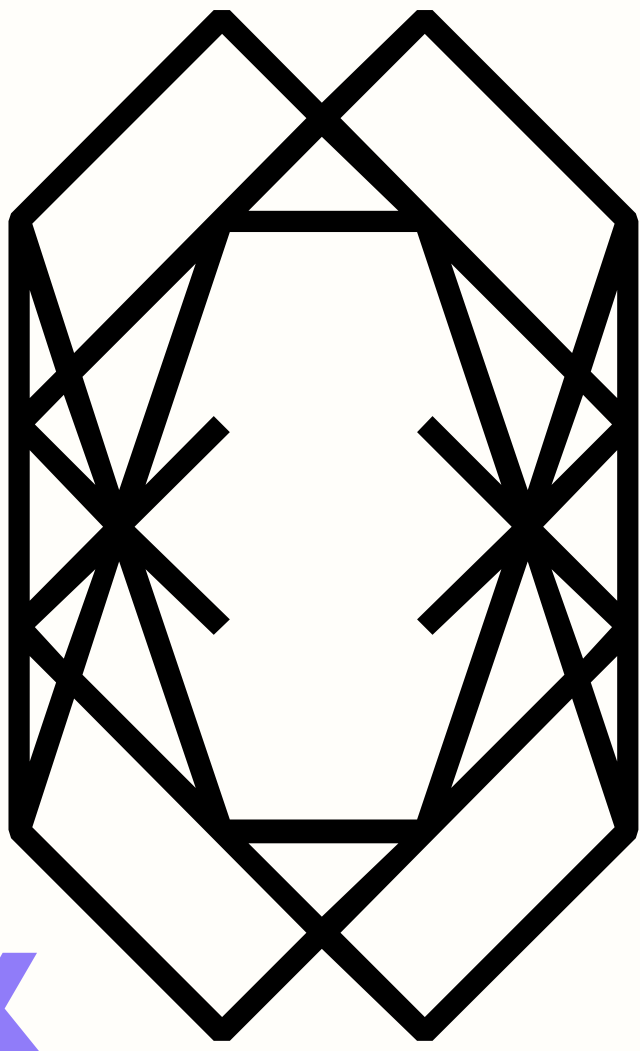
AND IT GOES



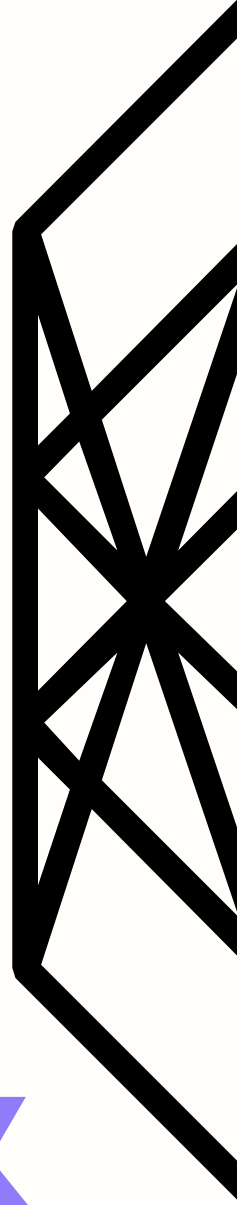
&

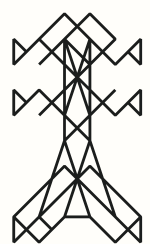


&

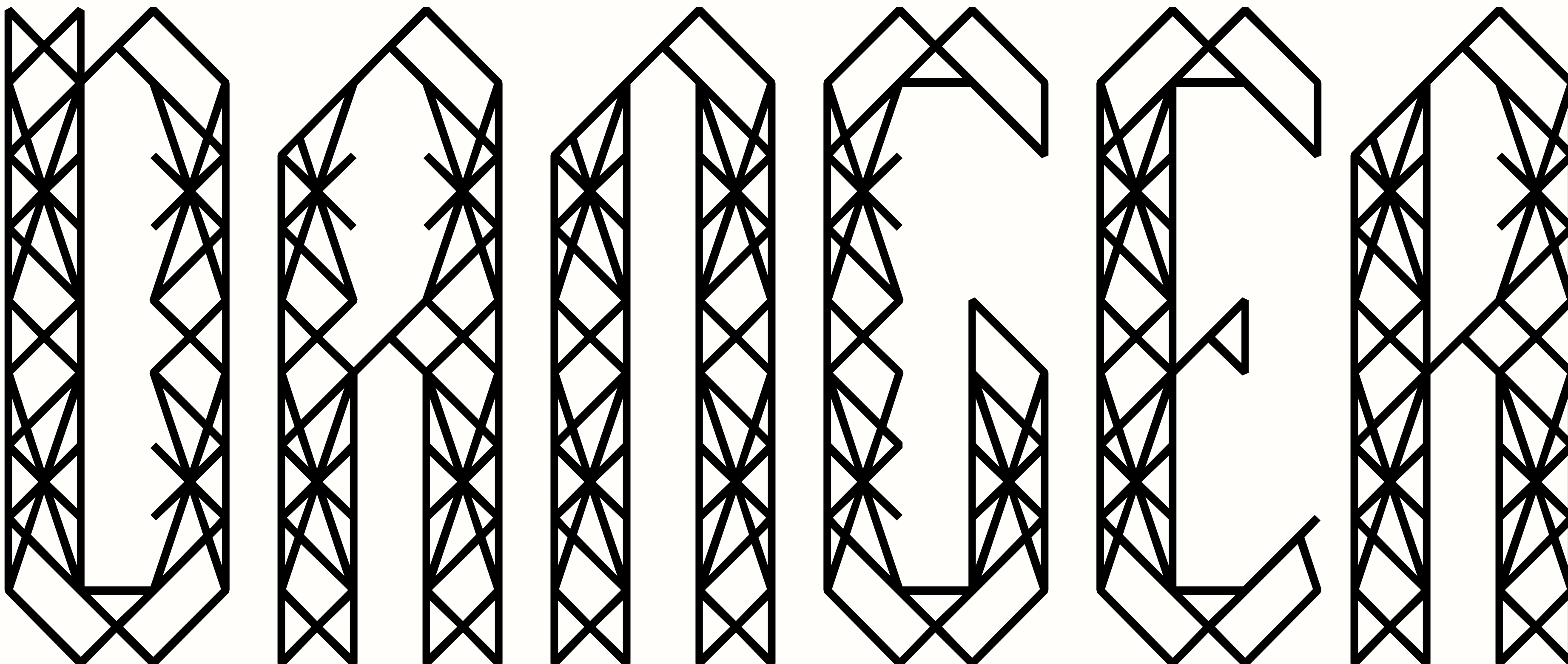


&



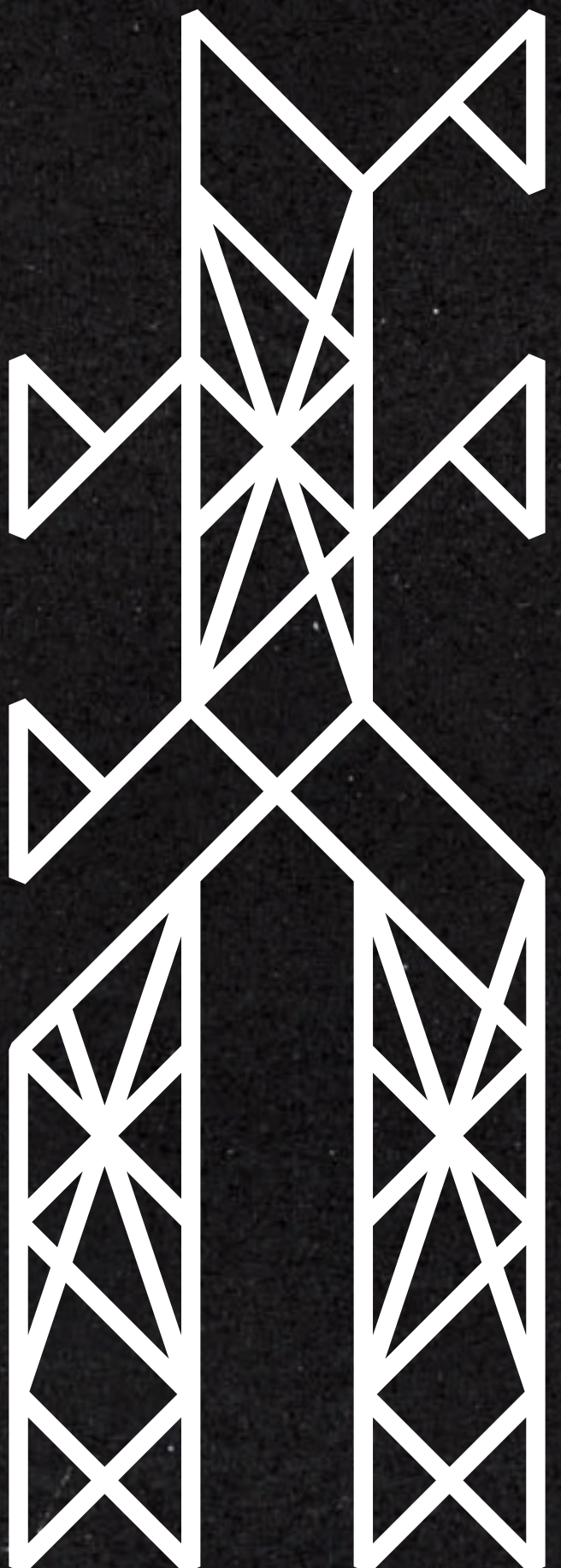


DANGER,



**HIGH VOLTAGE
WHEN WE TOUCH**





Sam Stanistreet



BLIGHT